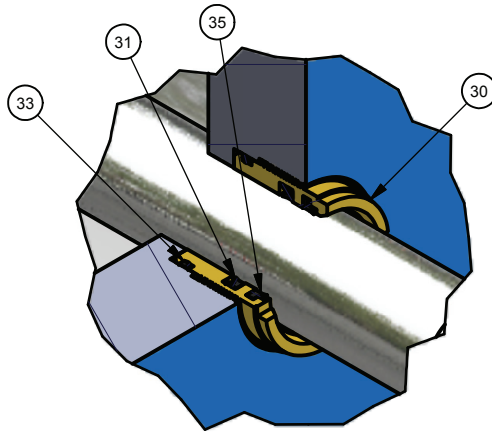


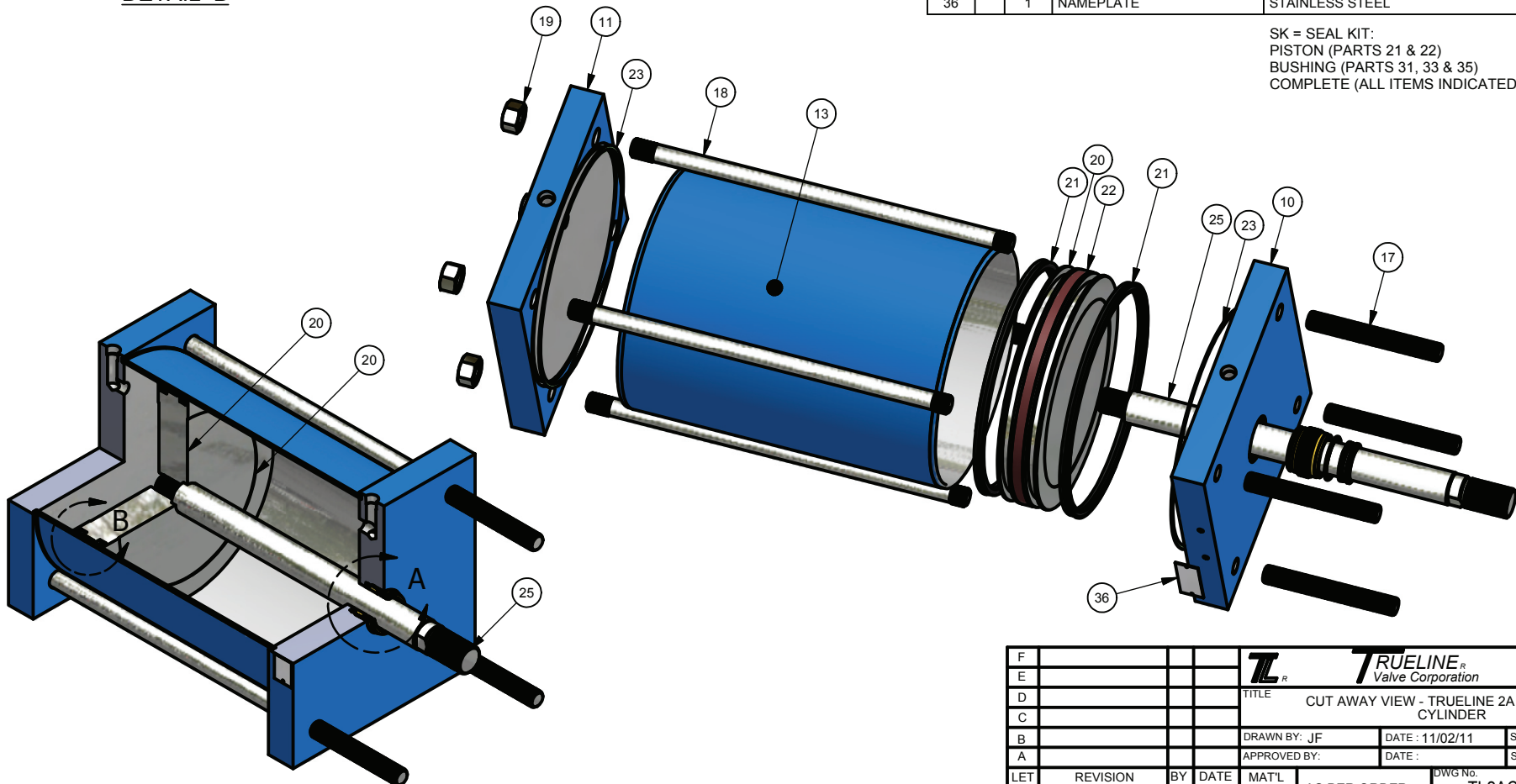
DETAIL B



DETAIL A

ITEM	SK	QTY	TITLE	DESCRIPTION
10		1	HEAD	ASTM A36 STEEL
11		1	CAP	ASTM A36 STEEL
13		1	BARREL	THERMOSET FIBER REINFORCED COMPOSITE
17		4	TIE ROD EXTENSION	3.25"~12" BORE: STAINLESS STEEL STUD 14"~20" BORE: EXTENSION FROM ITEM 18 (TIE ROD)
18		4	TIE ROD	STRESSPROOF STEEL
19		4	NUT	BORE: ZINC PLATED STEEL (GRADE 5)
20		1	PISTON	3.25"~8" BORE: HIGH STRENGTH ALUMINIUM (6061-T6) 10"~20" BORE: MILD STEEL
21	*	2	PISTON SEAL	U-CUP
22	*	1	WEAR STRIP (10"~20")	TEFLON TAPE FILLED WITH BRONZE & GLASS
23	*	2	BARREL SEAL	NA-60 NBR/ARAMID FIBER GASKET
25		1	PISTON ROD	STAINLESS STEEL 316 (CHROME PLATED)
30		1	GLAND BUSHING	SAE 660 BRONZE
31	*	1	PISTON ROD SEAL	NITRILE
33	*	1	GLAND SEAL	NITRILE
35	*	1	PISTON ROD WIPER	POLYURETHANE
36		1	NAMEPLATE	STAINLESS STEEL

SK = SEAL KIT:
 PISTON (PARTS 21 & 22)
 BUSHING (PARTS 31, 33 & 35)
 COMPLETE (ALL ITEMS INDICATED WITH " * ")



F									
E									
D									
C									
B									
A									
LET	REVISION	BY	DATE	MAT'L	AS PER ORDER	DWG No.	TL2ACYLINDER	REV	-
A	P	D		C	H	K			



TITLE CUT AWAY VIEW - TRUeline 2A PNEUMATIC CYLINDER

DRAWN BY: JF DATE: 11/02/11 SCALE: SHEET: 1 OF: 1

APPROVED BY: DATE: REV

SHEET SIZE A